



Operable Wall Systems

EXTREME LASHES
LASH EXTENSIONS

Brought over from the USA, this treatment is a favourite of the stars and now you too can enjoy having amazing lashes all the time.

Volume Set (an intensive lash treatment and tints to suit your eyes)	£49.00
Luxurious Set (an intensive lash treatment and tints with volume and tints)	£89.00
Extreme Set (an intensive lash treatment and tints with volume and tints)	£129.00

Join the rest and look your best!



spa find
NATURAL WELLS



ocean
spa

ocean
spa

Enjoy the fun
at Ocean

the

MonoClear

collection

Frameless Glass Systems

Contents



Introduction



Specification



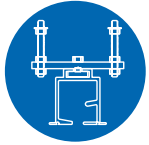
Stacking Arrangements



Panel Options



Finish Options



Head Fixing Details



Warranties



MonoServ

Introduction

Glass walls are excellent aesthetic dividers, offering many applications. The elements move on a top track via a Twin Point system, two carriage assemblies with system being able to stack in a variety of configurations (see stacking arrangements). The panels are stacked according to requirements and when deployed are locked into position with foot operated shoot bolts.

There is also a hinged version available which runs along our single point track. One carriage assembly at the top of alternate panels, stacking centrally on main line of track.

Available with a fixed pass door which is opened back whilst the panels forming the division may be stacked back to the system pass door.

The top and bottom profiles are of satin anodised aluminium. The glass is hardened safety glass 10mm or hardened laminated glass 5+5mm.

The maximum height of the elements is 3500mm. Taller ones are available but by having an extra portion added to each panel to a maximum of 1000mm.



Enjoy the fun way to age
at Ocean Hotel

Lovely
Pampering

Spa & Wellness

REQUA

Specification

Suspension & Support:

Top Hung Twin Point configuration via supportive head track, no floor track necessary. Folding Single Point system also available (see stacking details in next section).

Specification Sound Reduction Range:

Non acoustic.

Operation:

Manual.

Weight Range:

Up to 35 Kg per m².

Maximum Height:

Up to 3,500 mm. (higher systems available by adding a section to the top of each panel, max 1000mm)

Maximum Panel Width:

Up to 1200mm Panel Width.

Panel Thickness:

10mm Toughened Safety Glass.

Maximum Opening Width:

Varies according to system height and configuration.

Fire Ratings:

N/A

Glass Finishes:

Clear as standard. Frosted & Tinted also available (manifestation, or custom vinyl graphics available upon application)

Panel Clamp Extrusions (Top & Bottom):

Satin Anodised Aluminium (SAA) as standard, Electrostatic Powder Coating (EPC) also available in all RAL colours. (End caps remain in stainless steel)

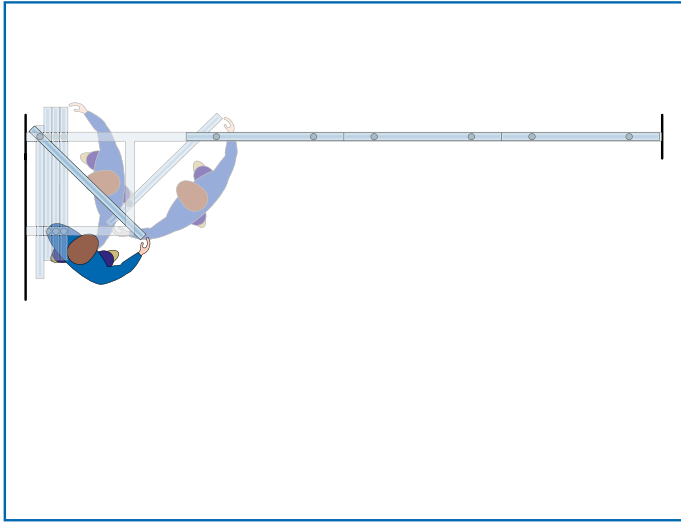
Track Options:

Twin Point aluminium track in Electrostatic Powder Coated (EPC) white, made to bespoke configurations to client specification and design.

For Folding Version Only - Single Point aluminium track in Electrostatic Powder Coated (EPC) white.

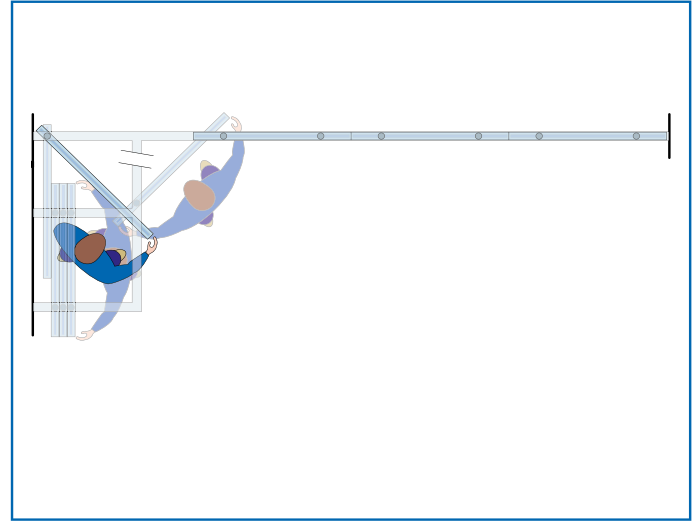


Stacking Arrangements



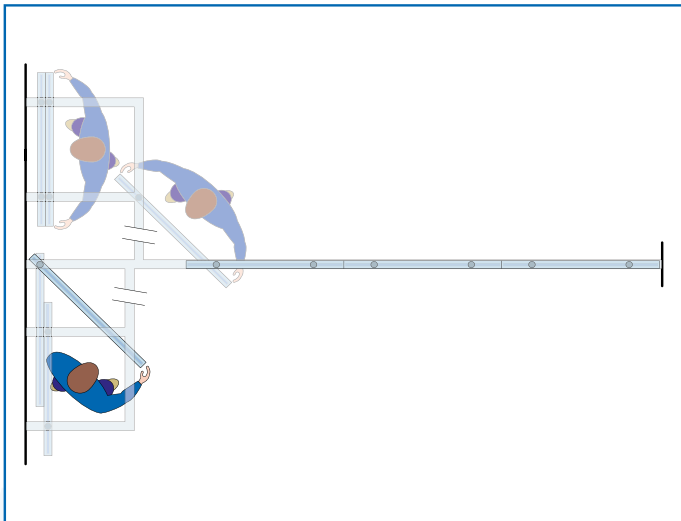
MC1 - Twin Point Offset Stack.

Each panel runs along the head track on two carriages. Panels do not turn freely but are controlled by both carriages to positively line up with the stacking area.



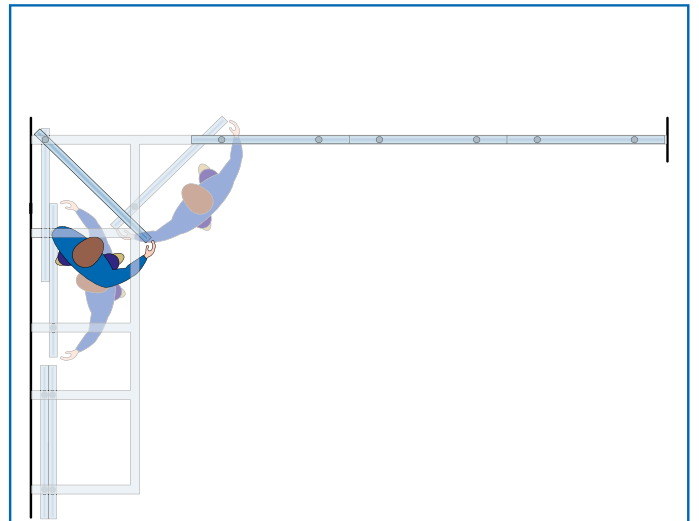
MC2 - Twin Point Remote Offset Stack.

Similar to the M2 stacking layout but there is a branch track between the main line and first stack leg. The branch track length can be adjusted to suit site conditions.



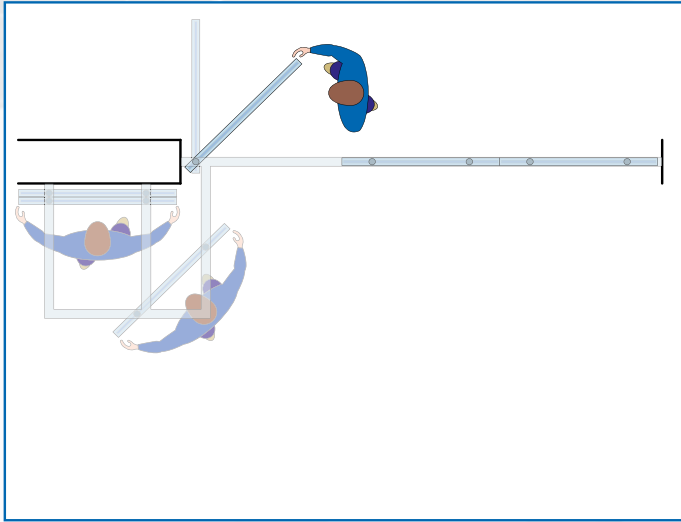
MC3 - Twin Point Dual Remote Split Stack.

Dual remote stacks can be used to maximise room space and reduce depth of panel stacks.



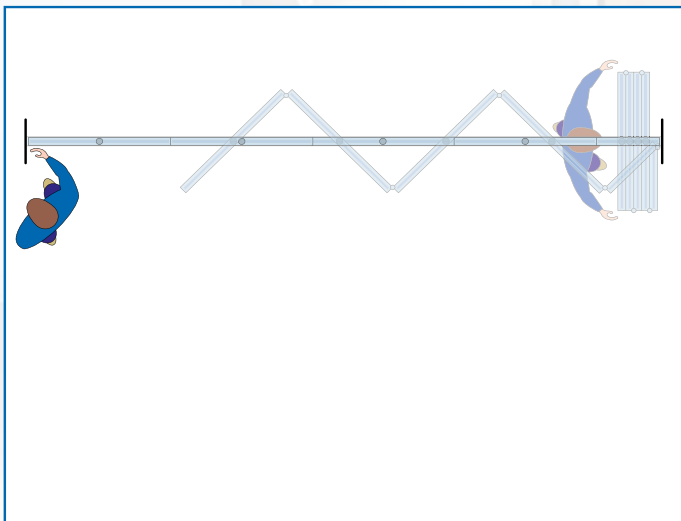
MC4 - Twin Point Dual Remote Stack.

Another variation of the dual stack layout, this time using a double stack offset to one side.



MC5 - Bespoke Stacking Arrangements.

Tailored arrangements can be agreed with our technical team.



MCF1 - Single Point Centre Fold.

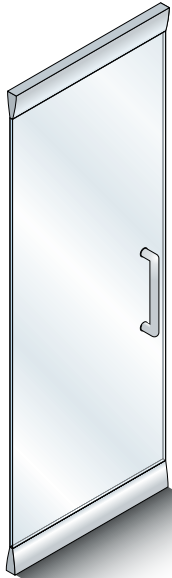
Each panel runs along the head track on a single, central carriage. Each panel is hinged to the next and are stacked at one end centrally to the track. The system pulls out from one side to close off the opening, with the lead panel being an active pass door.



Panel Options



Basic Panel



Full Height Pass Door
Permenantly hinged



MonoClear

Finish & Decor Options

As standard the MonoClear system comes with toughened safety glass panes held at the top and bottom with extruded aluminium profiles finished in Satin Anodised Aluminium (SAA) for quality and durability.

Complimenting this is the various hardware and door furniture available with this system.

We can also create bespoke finishes and details to help match the system with most fixed glass partition systems or, we can work together and fulfil those truly stunning additions to your design vision for a particular space.

Firstly, you can change the specification of the glass with two further options. Darker tinted or frosted glass is also available upon request.

The extruded aluminium profile at the top and bottom of the panels securing the glass can also be given the Electrostatic Powder Coated (EPC) treatment in any of the RAL colour palette you wish!

To further compliment designs we are also able to create a 'Crittall' style banding effect, so desired at the moment. Once the panels are hung and adjusted our installation engineers can fix the aluminium banding to the glass surface giving a wonderful look.

Furthermore, our vinyl team can create wonderful bespoke designs or some simple as manifestation. Or we can work/assist your own designer to create and apply that finishing touch.

Please note any vinyl designs can't be applied at the factory, they must be applied on site. The reason behind this is, the panels must be hung and levelled so that the design, even simple manifestation, will run along the panel with no unsightly steps in levels across the system, spoiling the aesthetic of the concept.



Ral 10002

Ral 10003

MonoClear

Finish & Decor Options

The opposite page shows the options which are available with the MonoClear system.

You can mix and match to create you own stunning finish combination to truly compliment you interior design vision.

Below is an example of this system which has had a bespoke treatment featuring; Frosted glass and Crittall effect aluminium banding with the head track and aluminium profiles all Electrostatic Powder Coated (EPC) aluminum profiles in RAL 9005 matt Jet Black.



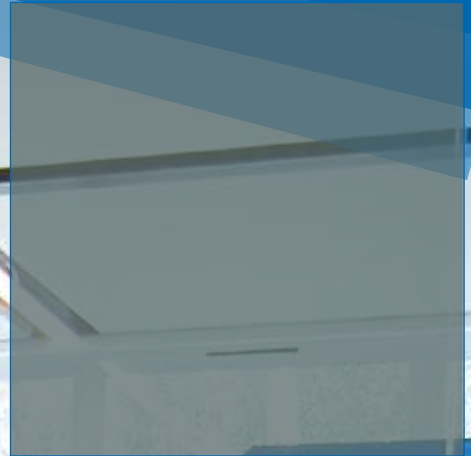
E&OE: Whilst every care has been taken to make this information and these finishes as true a representation as possible, printed media and/or computer screens will give slight variations.



Clear Glass
As Standard



Frosted
Upon Request



Dark Tint
Upon Request



Bespoke Crittall Design
Upon Request



Bespoke Vinyl Designs
Upon Request



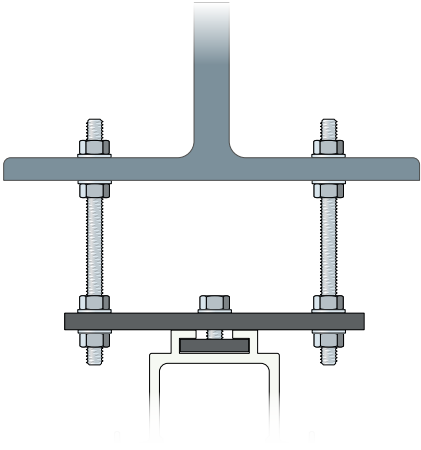
Manifestation
Upon Request



Aluminium Profile
In RAL Colours Upon Request

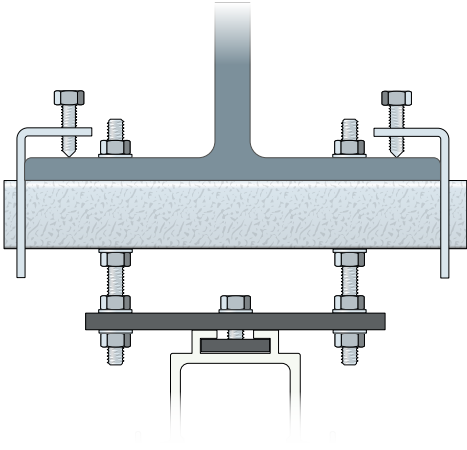
MonoClear

Fixing Details Steel Beams



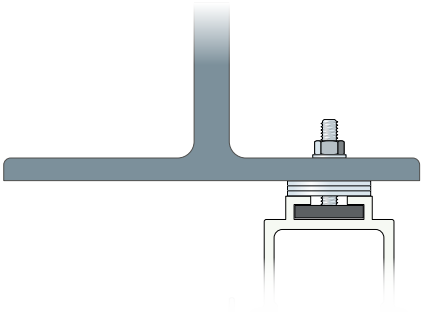
MS 100

Straight RSJ ('I' Beam) Fix For
Single Point and Twin Point Track



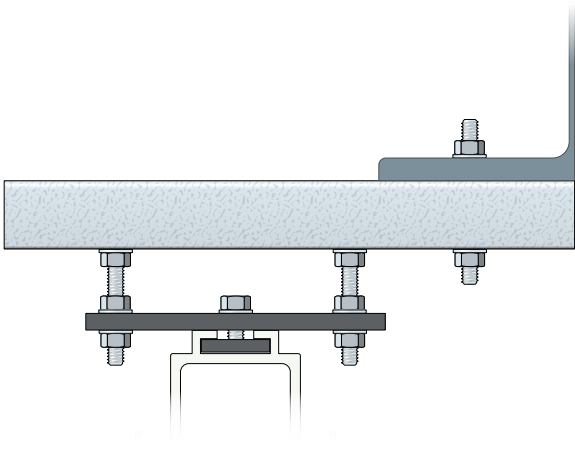
MS 101

Beam Clamp RSJ ('I' Beam) Fix For
Single Point and Twin Point Track



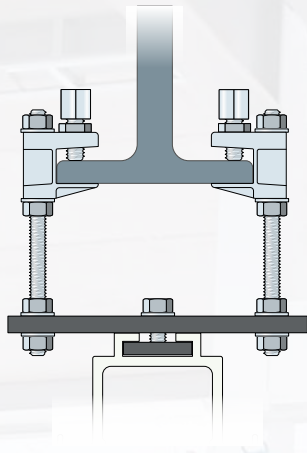
MS 103

Direct RSJ ('I' Beam) Fix For
Single Point and Twin Point Track



MS 104

Offset/Cantilever RSJ ('I' Beam) Fix For
Single Point and Twin Point Track



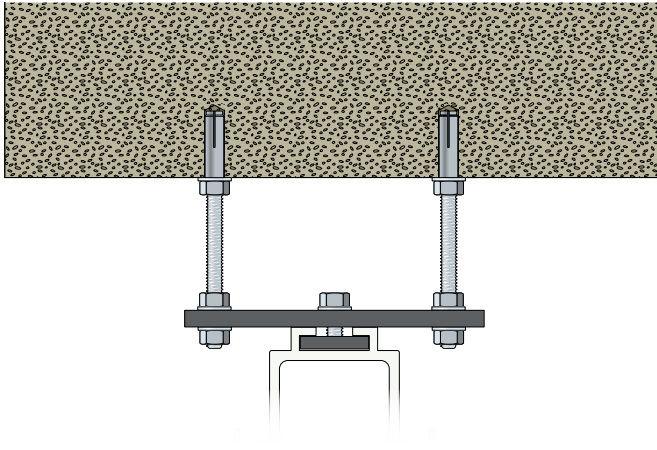
MS 102

Flange Clamp Narrow RSJ (1" Beam) Fix For
Single Point and Twin Point Track



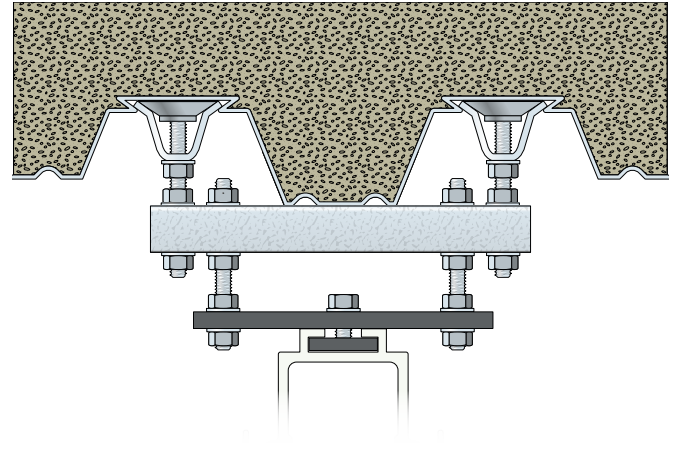
MonoClear

Fixing Details Concrete Slabs & Decks



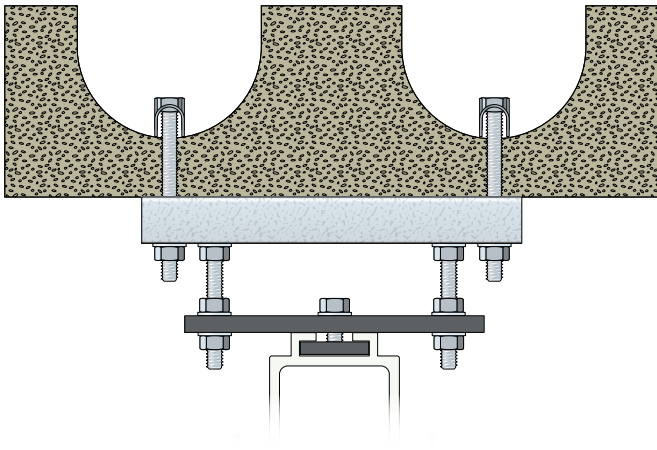
MC 100

Straight Concrete Fix For
Single Point and Twin Point Track



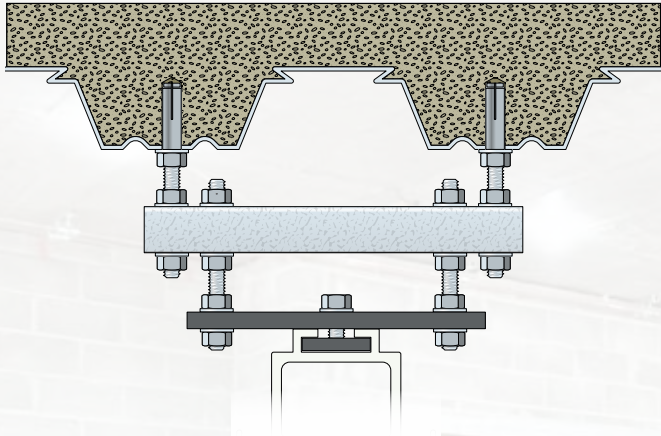
MC 101

Composite Deck Fix with Wedge Fixings For
Single Point and Twin Point Track



MC 103

Hollow Pre-Cast Concrete Fix For
Single Point and Twin Point Track



MC 102

Composite Deck Fix with Straight Fix For
Single Point and Twin Point Track



Warranty

Monowa Operable Wall Systems Ltd warrants products for a period of 12 months from the date of delivery/installation or clients handover date by Monowa Operable Wall Systems Ltd.

Extended warranty arrangements may be agreed with our sales team at time of order.

The Goods shall: (a) conform in all material respects with their description; (b) be free from material defects in design, material and workmanship; and (c) be of satisfactory quality (within the meaning of the Sale of Goods Act 1979).

For further piece of mind, we would always recommend taking out our offer of a MonoServ service, maintenance and safety packages for your PPM (Planned Preventative Maintenance) programmes.

We have a variety of packages available to suit your circumstances. Our qualified engineers will visit your site and keep your movable wall in good working condition, so it may serve you well for many years to come, even when the defects liability period has run its course.

Full details of all our services for your PPM (Planned Preventative Maintenance) programmes, can be found in the next section of this brochure.



SFG20

Our range of Operable Walls & Sliding Folding Systems have been designed and engineered to a high standard and given the right care, attention and maintenance they will last for many years.

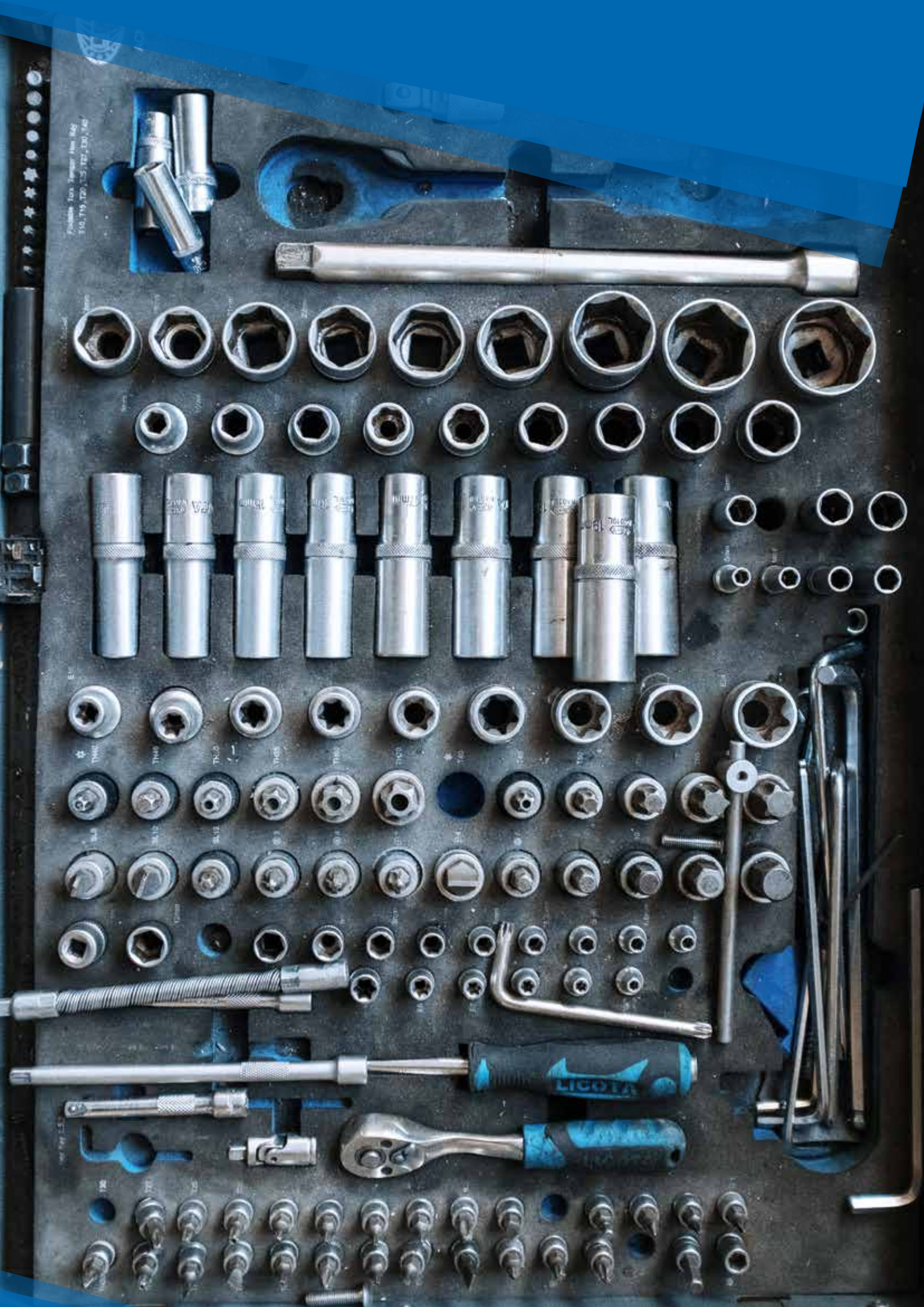
Monowa highly recommend that a thorough service is carried out every 12 months depending on the daily usage to fulfill for your PPM (Planned Preventative Maintenance) programmes. A regular service can save you money in the long term as this could highlight any potential costly repairs before they become a serious problem.

We are not restricted to just Monowa products, our engineers are all qualified to work on all manufacturers movable walls which makes using our MonoServ packages very advantageous when maintenance budgets are concerned. We can also supply parts for most manufacturers systems.

All of our MonoServe packages exceed the SFG20 industry standard, by the Building Engineering Services Association (BESA), giving you peace of mind that you will be fully compliant, in the respect of this element of you PPM program.

When booking a service plan please let us know of any issues or difficulties before we come. Many issues can be diagnosed beforehand giving our teams the opportunity to bring and extra parts to remedy the situation, thus cutting down on any further disruption or extra call outs.

We understand that 'one size' does not fit all, with this in mind we offer three packages to make MonoServ even more flexible



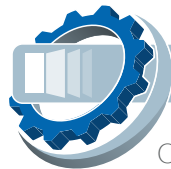
MonoServ Packages

Comprehensive but simple service,
maintenance and inspection
packages tailor-made to
your needs.



MonoServ Bronze Package

'One Off' service. A comprehensive service as and when required. We will contact you annually as a reminder. This option does not have discounted rates available.



MonoServ Silver Package

Our Silver option is a 3 year package, with a price reduction (invoiced annually). We will contact you each year for the 3 year duration, to book your service at a convenient date. This option will entitle you to a discounted rate on any parts should they be required.



MonoServ Gold Package

Our Gold option is the most cost effective. We will contact you each year for the 5 year duration, to book your service at a convenient date. This option will entitle you to a discounted rate on any parts should they be required.

More Details

A closer look of what is included and what you can expect when you retain the MonoServ range of service, maintenance and inspection packages.



MonoServ Biennial Contracts

Don't need servicing every year? Simply sign up to our Silver or Gold packages and turn them into a biennial package, covering you for six or ten years, at the same price.



MonoServ Reactive Call Out

Have an issue with your movable wall but are months away from your annual inspection? Not a problem, contact us and we can arrange a reactive call-out inspection and repair*. Even if you have not signed up for one of our packages, please call us, we can still perform a reactive call-out for your piece of mind.



MonoServ Payment Details

No up-front costs! It doesn't matter if you just have the Bronze package, or decide to go with our Silver or Gold options, there are no up-front costs. We will only issue an invoice after each yearly visit once the scheduled work has been carried out (subject to credit).



MonoServ Service Records

To comply with Health & Safety, all service works are recorded by our engineers with a maintenance inspection report and a completion certificate. These are processed by head office and emailed to you for your records. Please note, for a Reactive Call Out, a completion certificate will be issued advising of the work undertaken.

*Where possible we will always come to site within 48hrs of the initial call. There may be an occasion when we need to order parts and quote for a chargeable return visit.

MonoClear

Frameless Glass Systems

Works Carried Out

- ✓ Re-levelling of panels
- ✓ Checking of top trolleys for damage/wear
- ✓ Lubrication of top carriages
- ✓ Checking of head track for damage/wear
- ✓ Lubrication of internal cavity of head track
- ✓ Checking of top and bottom brush seals
- ✓ Checking and adjusting operation of floor shoot bolts
- ✓ Checking and clearing out shoot bolt floor sockets
- ✓ Checking for visible signs of faults/damage and reporting on condition
- ✓ Cleaning of aluminium top and bottom encasement profiles
- ✓ Checking of operation and adjustment of door panel
- ✓ Cleaning of glass panels
- ✓ Full demonstration of wall
- ✓ Issue of completion certificate for your maintenance records

Where applicable, minor works which have been identified during the service will be done FOC such as:

- ✓ Re-securing of door hinges
- ✓ Re-securing of door handles

Extra Works

Where any major works have been identified this will be brought to your attention by our operatives at the time of service and a separate quotation will be forwarded for your consideration. Major works include (list not exhaustive):

- Carriage changes
- Damage to mechanisms such as hinges and shoot bolts
- Missing components/parts

We carry most spares for different manufacturers systems; however, this will have to be discussed at the time of service as we may not carry the specific spare in stock.

Sign up for our silver or gold packages and benefit from 20% off the cost of spare parts

Contact Details

Registered Company Name:

Monowa Operable Wall Systems Ltd

Head Office:

Greenacres
Flaunden Lane,
Belsize
Rickmansworth
WD3 4NS

Tel:

01923 244 258

Email:

sales@monowa.co.uk

Web

monowa.co.uk

Company Contacts

Service & Maintenance:

servicing@monowa.co.uk
01923 244 258

