

Operable Wall Systems

Greenacres, Flaunden Lane,
Belsize, Hertfordshire. WD3 4NS
01923 244 258

SYSTEM: MonoWall/Clear/Glaze

TITLE:
Wallpost mouting to PSE timber

DRAWING NO: MG-T-100

REV: 1.0 **DATE:** 01.11.24

DRAWING BY: Chris Hardey

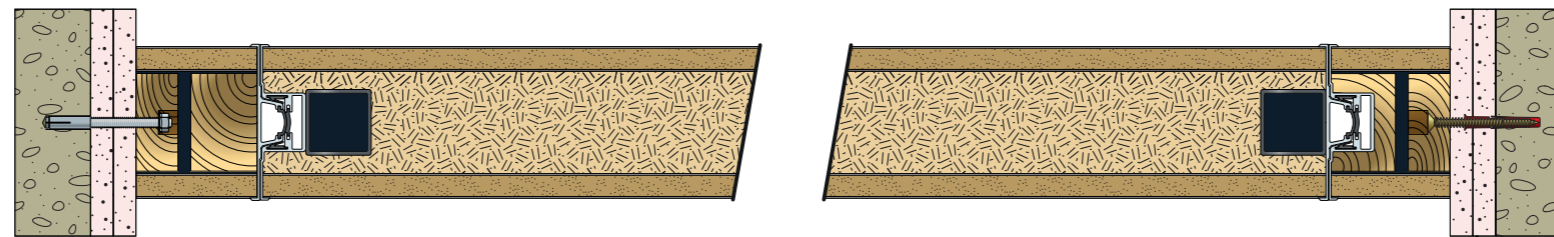
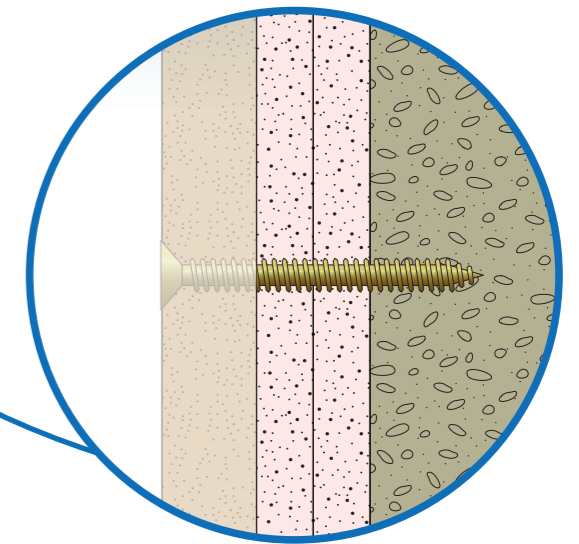
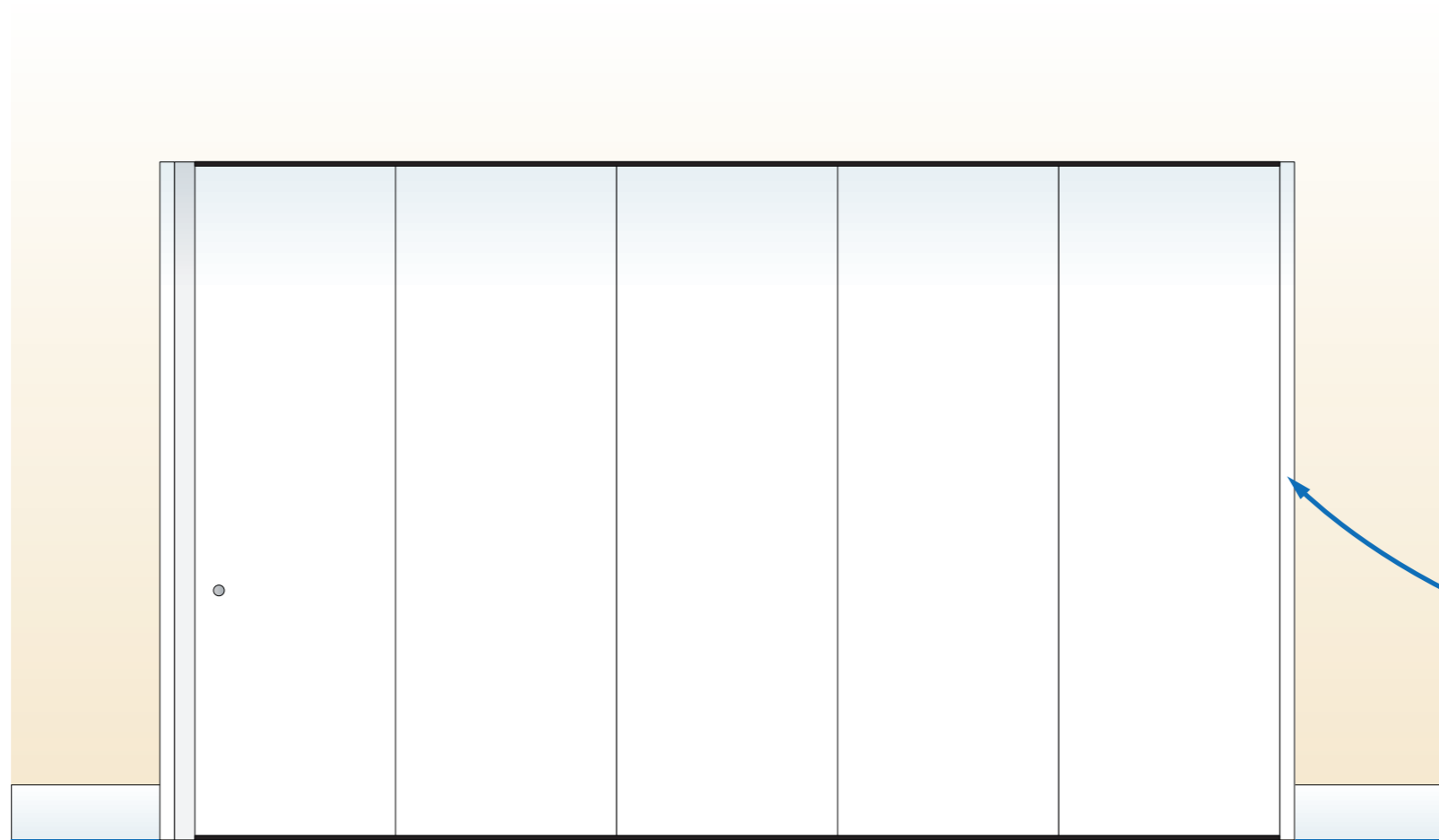
SCALE: NST

For use with all:
Single Point and Twin Point
MonoWall Movable Walls

The information contained within this drawing is
Confidential, and remains the sole property of
Monowa Operable Wall Systems Ltd
COPYRIGHT Monowa Operable Wall Systems Ltd © 2024

MG-T-100 Wall Post Mounting Detail

Fixing into PSE timber grounds



Operable Wall Systems
 Greenacres, Flaunden Lane,
 Belsize, Hertfordshire. WD3 4NS
 01923 244 258

SYSTEM: MonoWall/Clear/Glaze

TITLE:
 Wallpost mouting to concrete or
 blockwork

DRAWING NO: MG-C-100

REV: 1.0 **DATE:** 01.11.24

DRAWING BY: Chris Hardey

SCALE: NST

For use with all:
 Single Point and Twin Point
 MonoWall Movable Walls

The information contained within this drawing is
 Confidential, and remains the sole property of
 Monowa Operable Wall Systems Ltd
 COPYRIGHT Monowa Operable Wall Systems Ltd © 2024

MG-C-100 Wall Post Mounting Detail

Fixing into concrete or blockwork grounds